

사용 메뉴얼

학번	이름
201511238	허준호
201911147	강숙영
201711320	오준엽
201511218	이지영
201710397	이지훈

MainProject Setting

MainProject
Setting

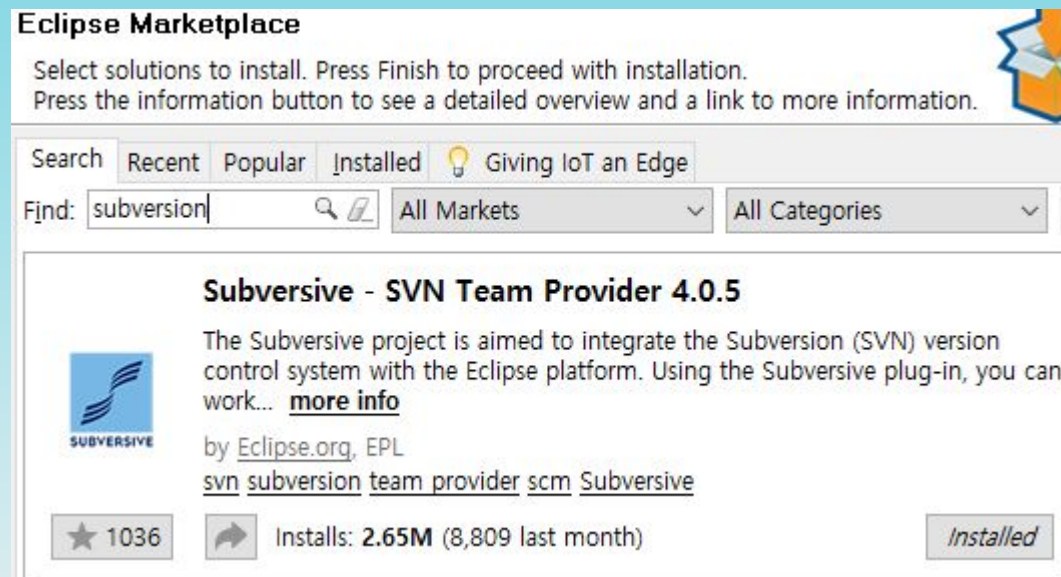
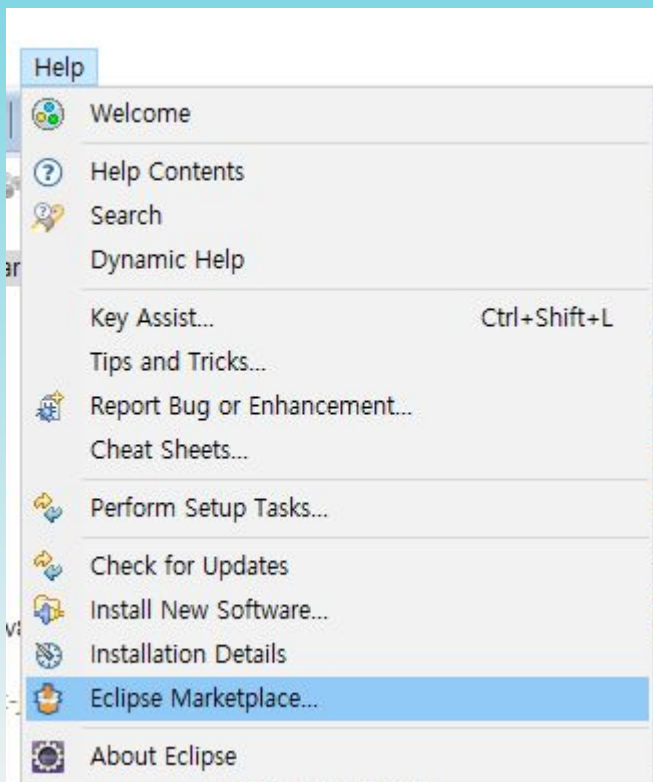
eclipse 홈페이지 에서 java ee ide를 다운받는다.

<https://www.eclipse.org/downloads/packages/release/kepler/sr2/eclipse-ide-java-ee-developers>

SMA_Project
Setting

1안과 2안중 선택해서 진행한다.

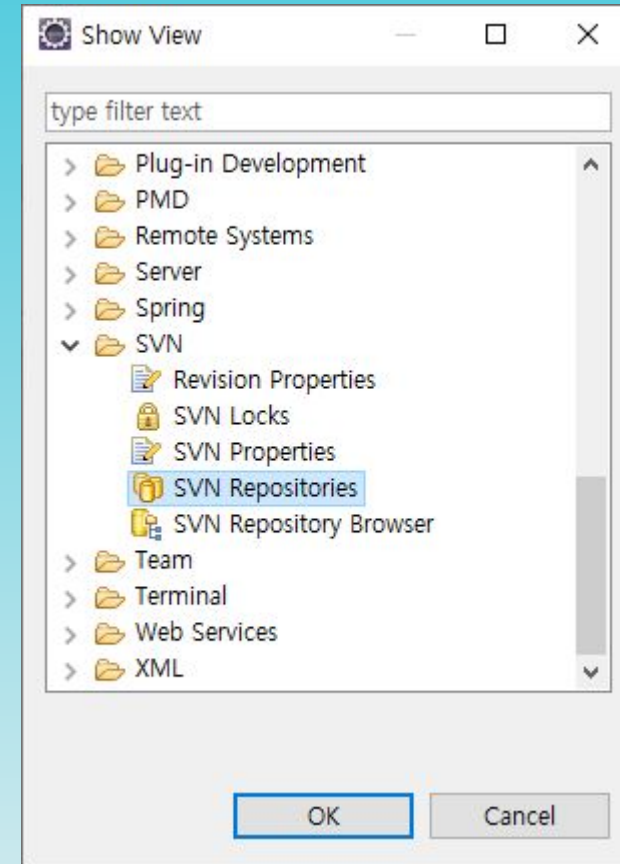
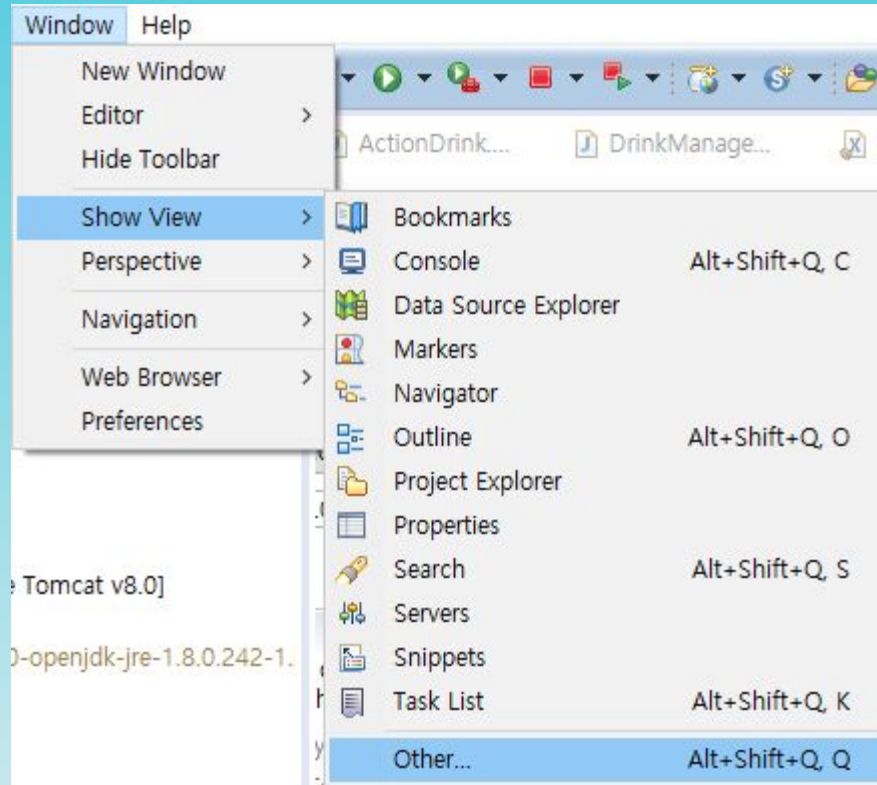
1. project 파일을 import한다.
2. svn 주소를 레포에 등록해 checkout받는다



MainProject Setting

MainProject
Setting

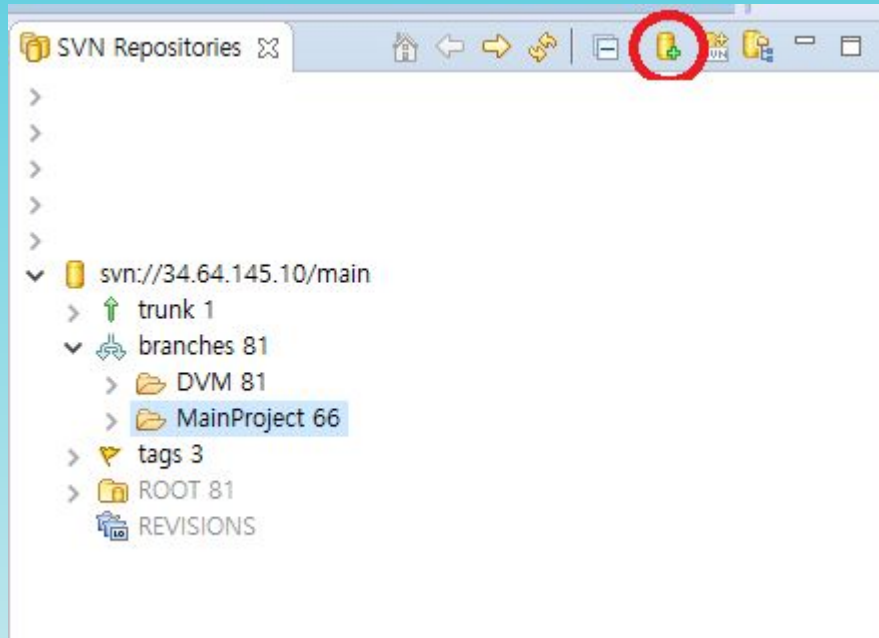
SMA_Project
Setting



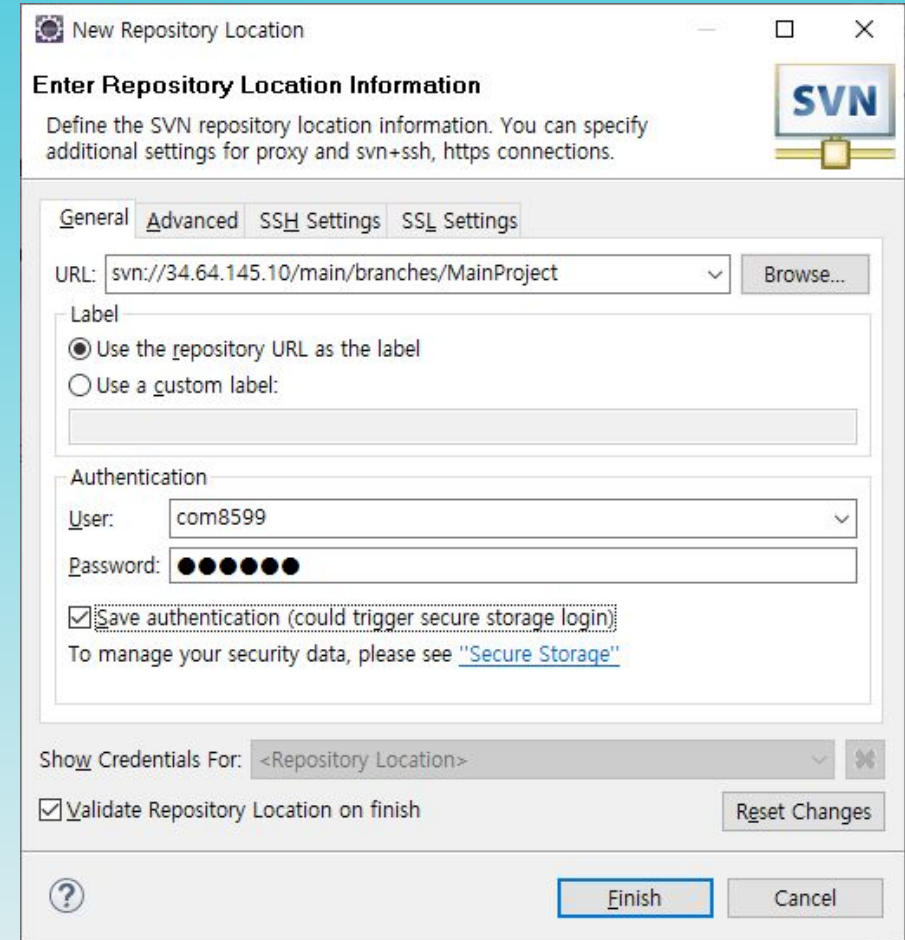
MainProject Setting

MainProject
Setting

SMA_Project
Setting



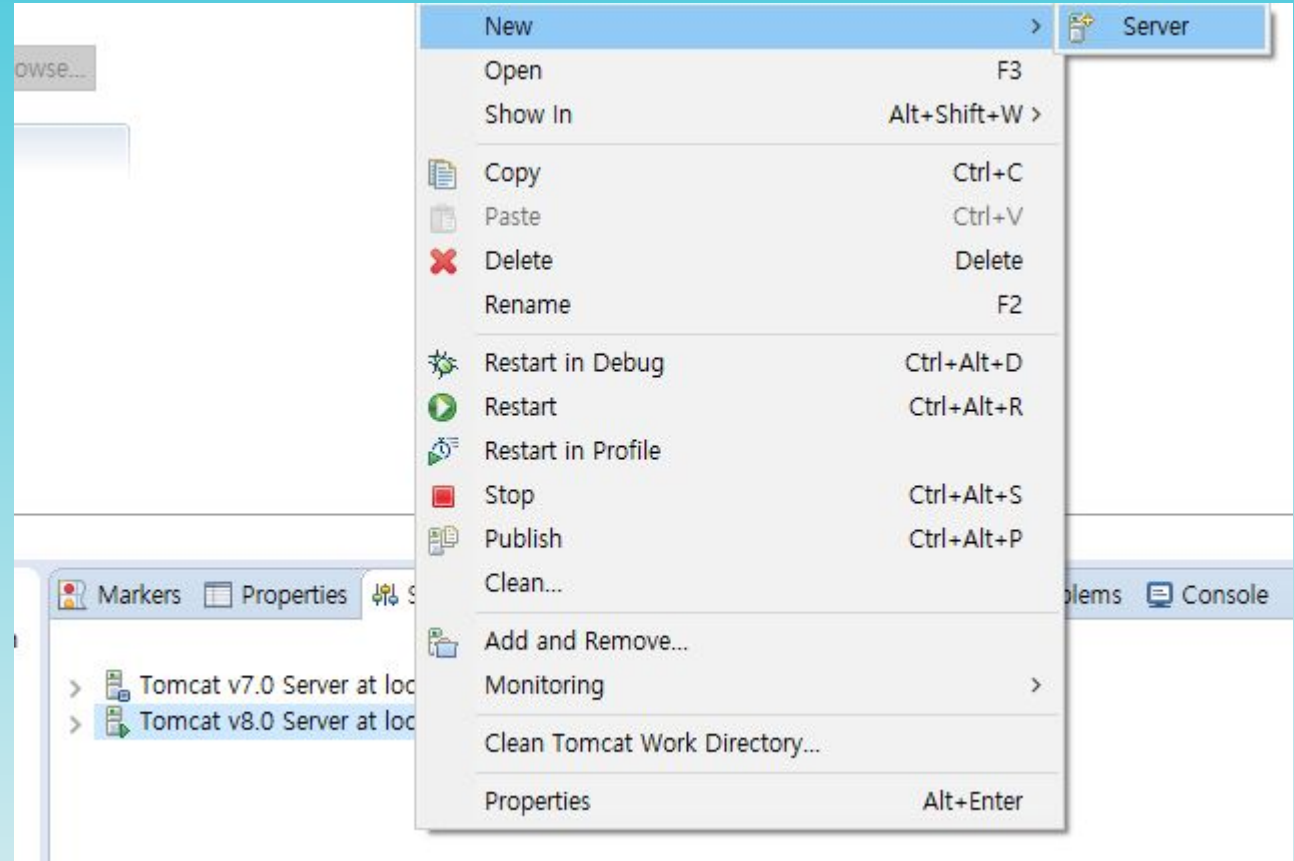
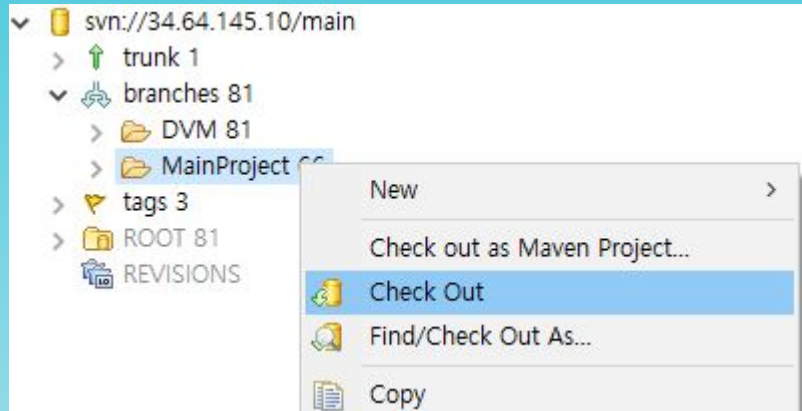
svn://34.64.145.10/main/branches/
MainProject **id:com8599//pw:thddl4**



MainProject Setting

MainProject
Setting

SMA_Project
Setting



MainProject Setting

MainProject
Setting

SMA_Project
Setting

New Server

Define a New Server
Choose the type of server to create

Show downloadable server adapters

Select the server type:

type filter text

- Tomcat v6.0 Server
- Tomcat v7.0 Server
- Tomcat v8.0 Server
- > Basic
- > Caucho Technology, Inc.
- > IBM
- > JBoss by Red Hat

Publishes and runs J2EE and Java EE Web projects and server configurations to a local Tomcat server.

Server's host name: localhost

Server name: Tomcat v8.0 Server at localhost (2)

Server runtime environment: Apache Tomcat v8.0 [Add...](#)

[Configure runtime environments...](#)

[?](#) [< Back](#) [Next >](#) [Finish](#) [Cancel](#)

New Server

Add and Remove
Modify the resources that are configured on the server

Move resources to the right to configure them on the server

Available:

- SamW
- SamW2(SamW)
- SamW_Black(SamW)
- SamW_OB(SamW)
- SamW_Old(SamW)
- SamW_Web3
- SamWTestPacket(SamW_V

Configured:

- MainProject2(MainProject

[Add >](#)

[< Remove](#)

[Add All >>](#)

[<< Remove All](#)

[?](#) [< Back](#) [Next >](#) [Finish](#) [Cancel](#)

MainProject Setting

MainProject
Setting

SMA_Project
Setting

The screenshot shows the Eclipse IDE's 'Overview' page for a Tomcat server configuration. The 'General Information' section is expanded, showing the server name as 'Tomcat v8.0 Server at localhost' and the host name as 'localhost'. The 'Runtime Environment' is set to 'Apache Tomcat v8.0'. The 'Server Locations' section is also expanded, showing the server path and deploy path. The 'Server Options' section is expanded, and the checkbox for 'Serve modules without publishing' is checked. A context menu is open over the server list, with the 'Start' option selected. A text box with Korean text is overlaid on the 'Timeouts' section.

tomcat admin port 는 SMA_Project 와 겹치지만 않게 해주면됩니다.

Port Name	Port Number
Tomcat admin port	9009
HTTP/1.1	8080

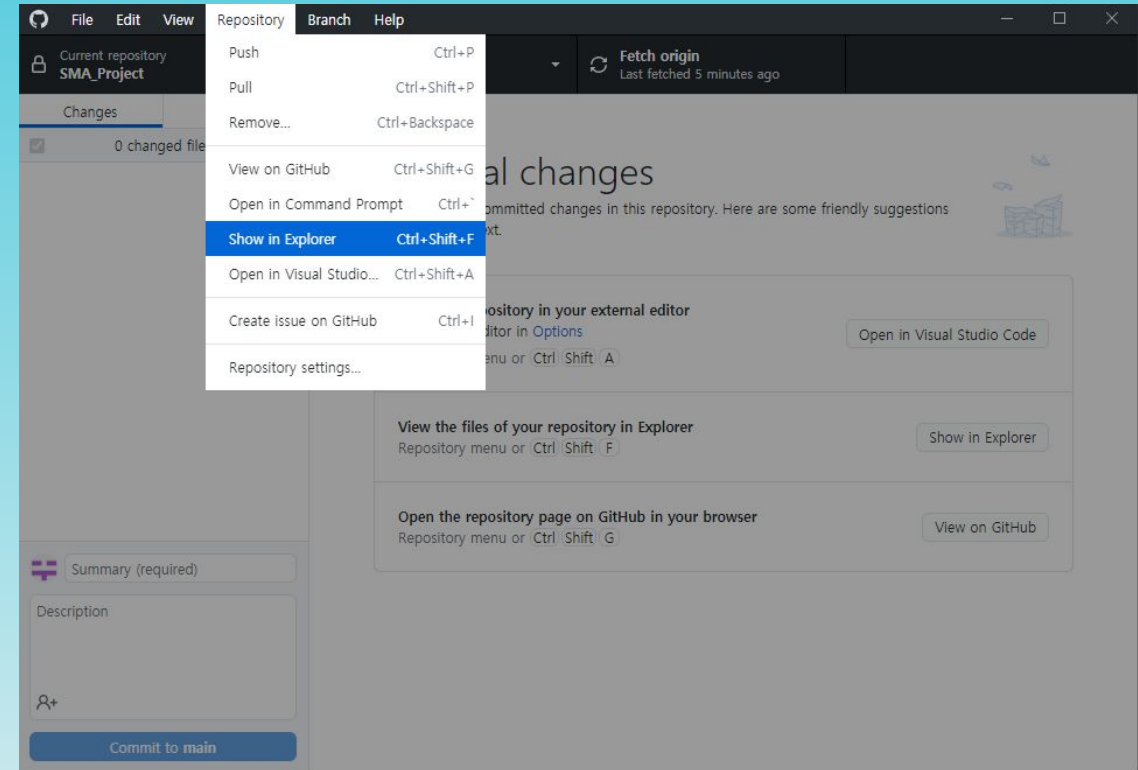
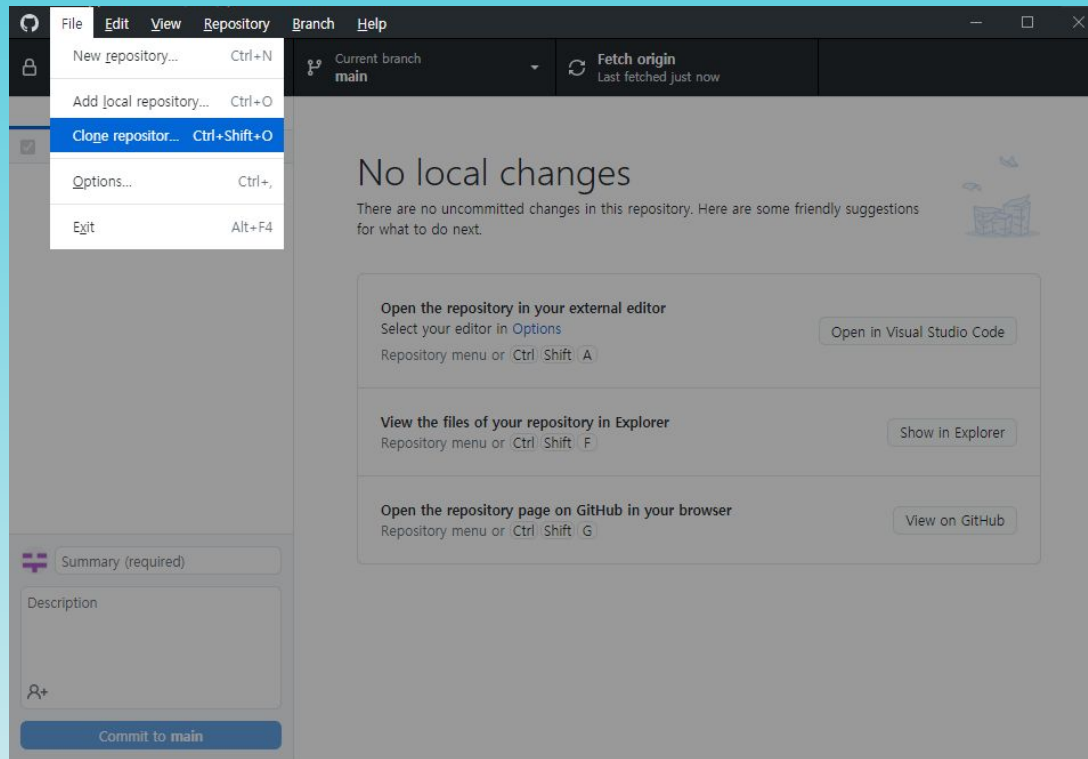
- Debug (Ctrl+Alt+D)
- Start (Ctrl+Alt+R)
- Profile
- Stop (Ctrl+Alt+S)
- Publish (Ctrl+Alt+P)
- Clean...
- Add and Remove...
- Monitoring
- Clean Tomcat Work Directory...
- Properties (Alt+Enter)

SMA_Project Setting

MainProject
Setting

https://github.com/KUSVV-2021/SMA_Project.git

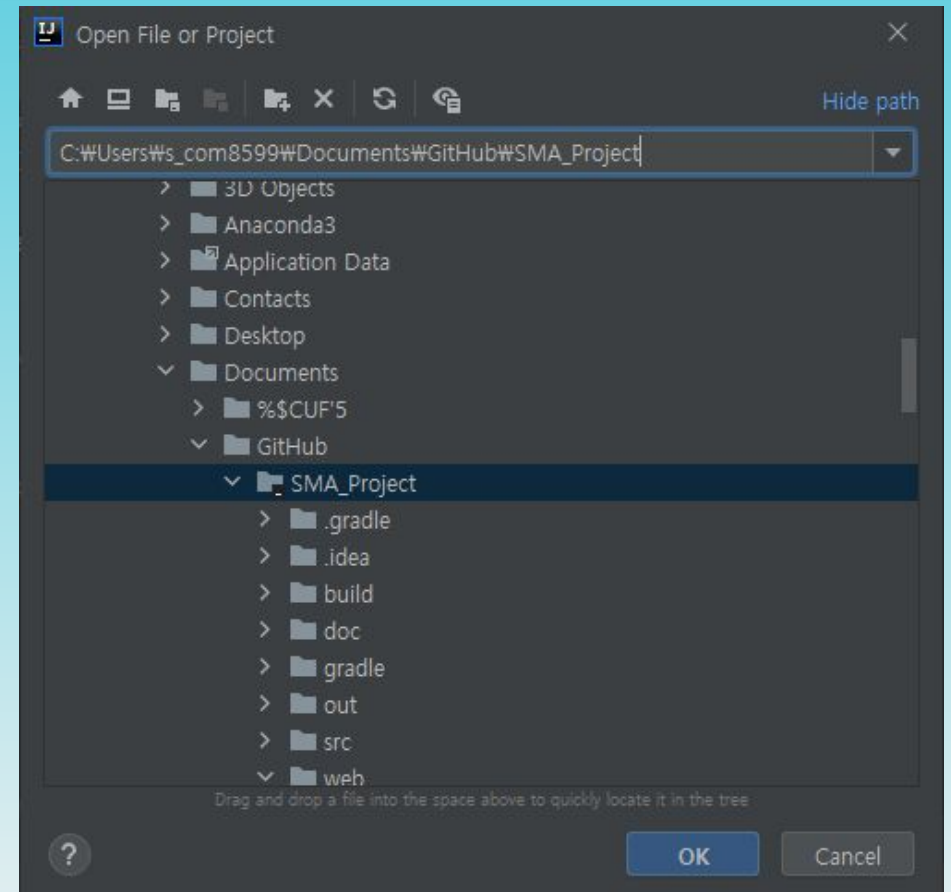
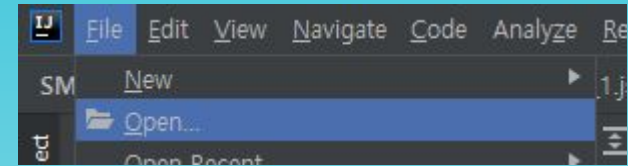
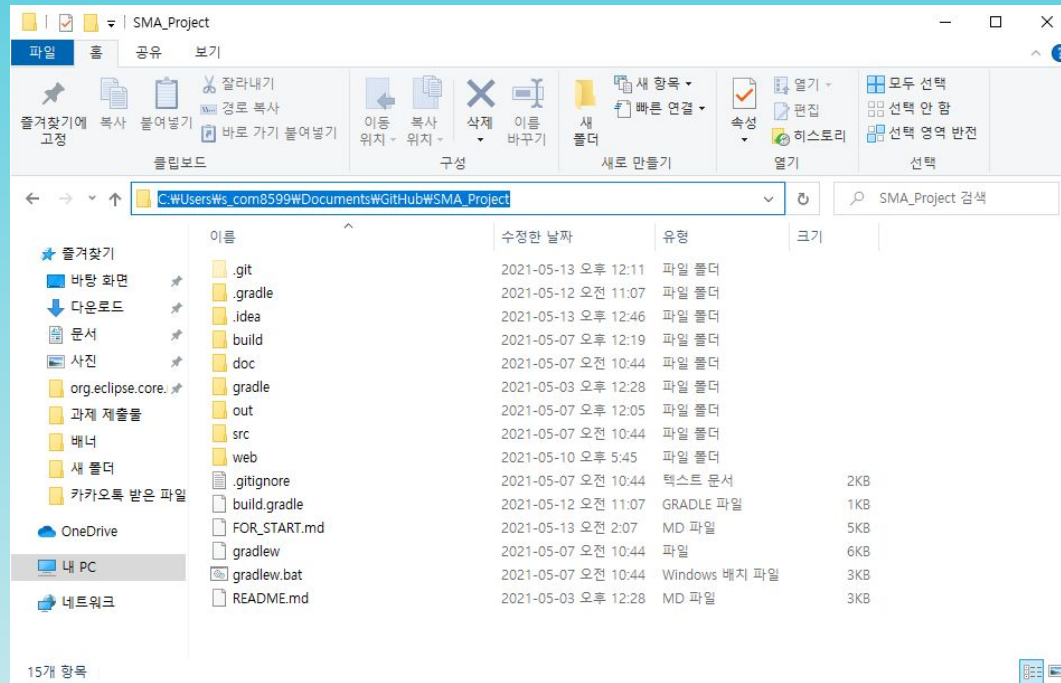
SMA_Project
Setting



SMA_Project Setting

MainProject
Setting

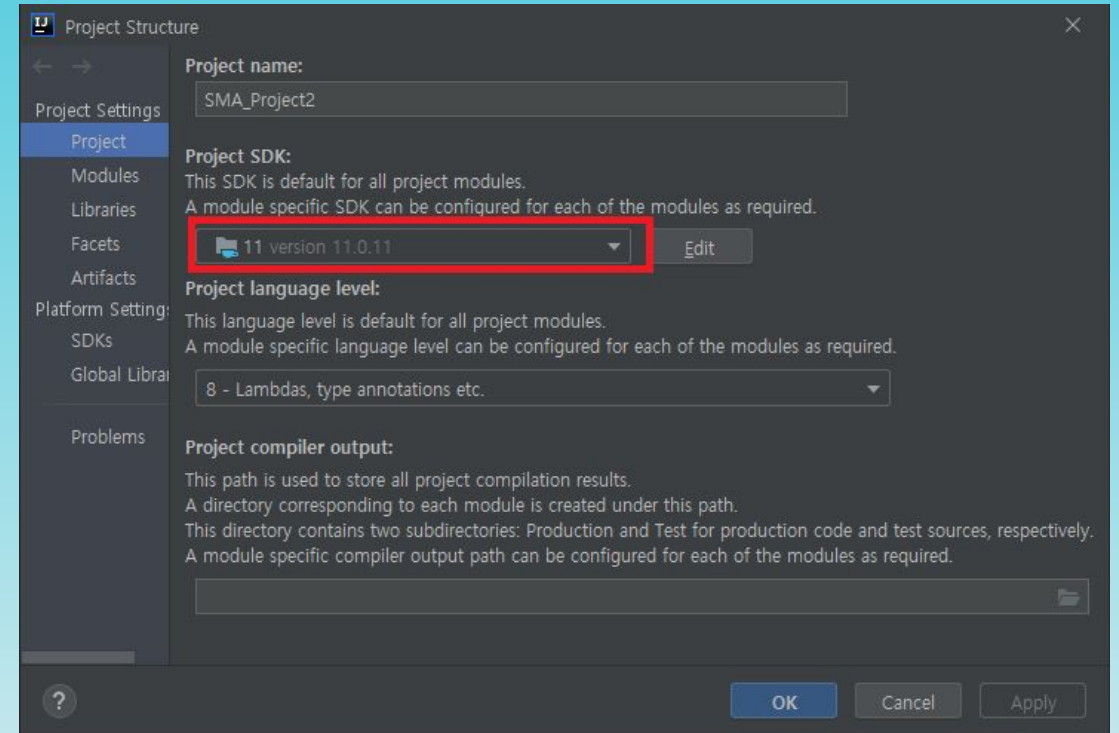
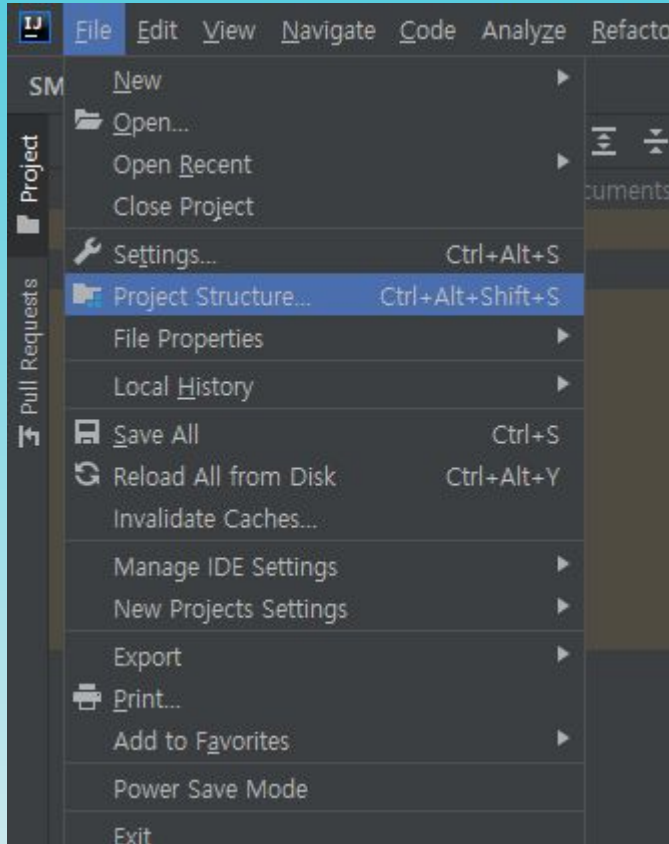
SMA_Project
Setting



SMA_Project Setting

MainProject
Setting

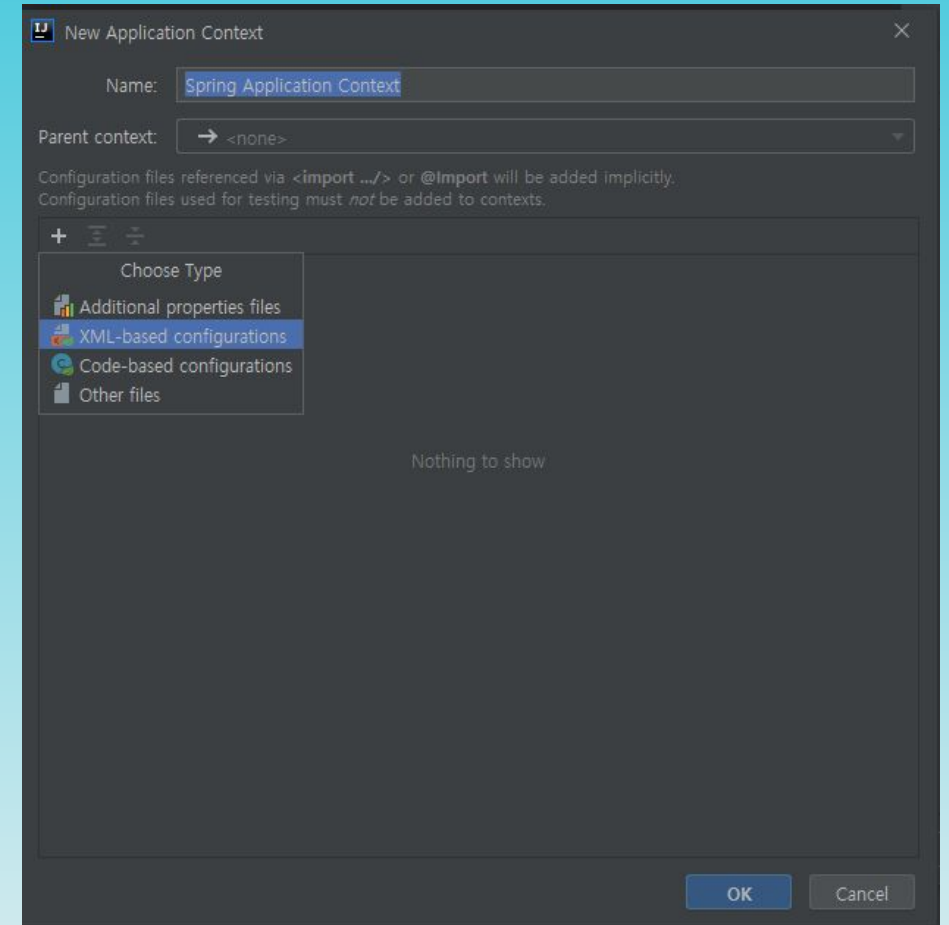
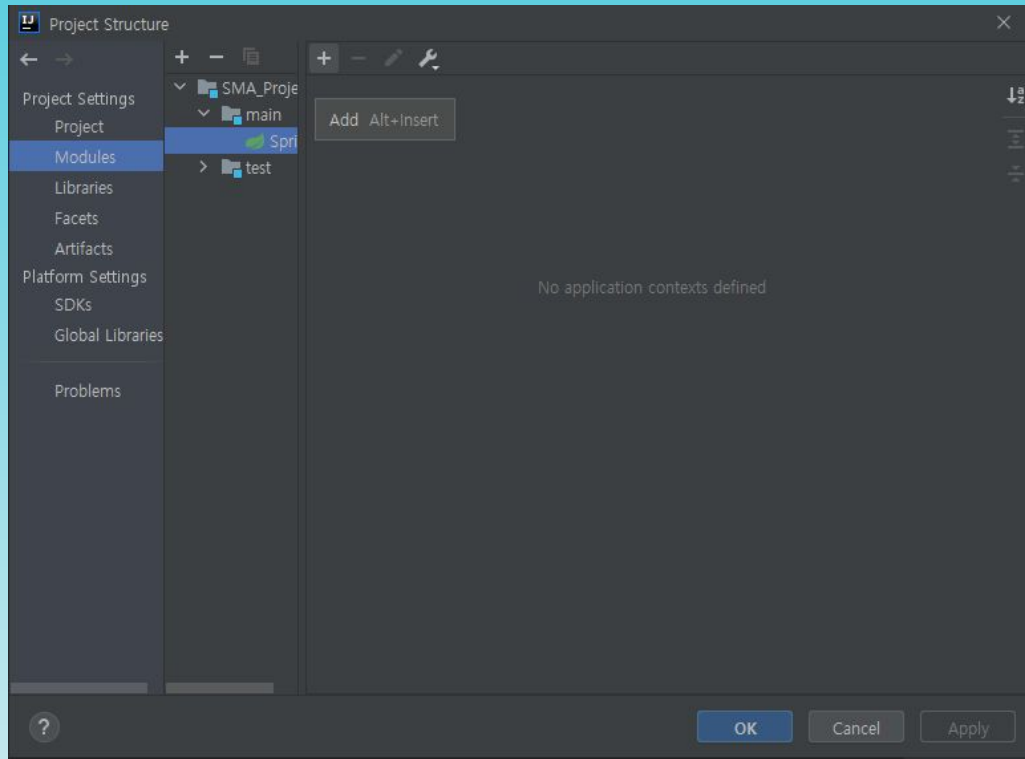
SMA_Project
Setting



SMA_Project Setting

MainProject
Setting

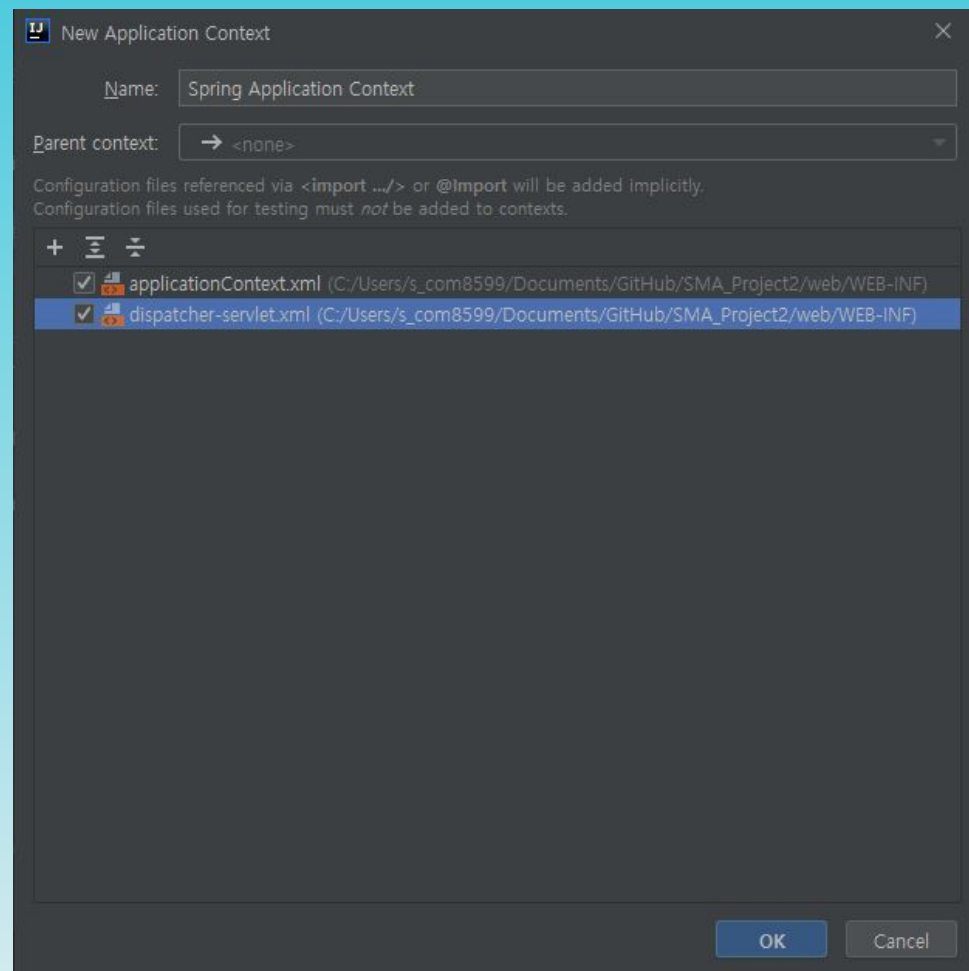
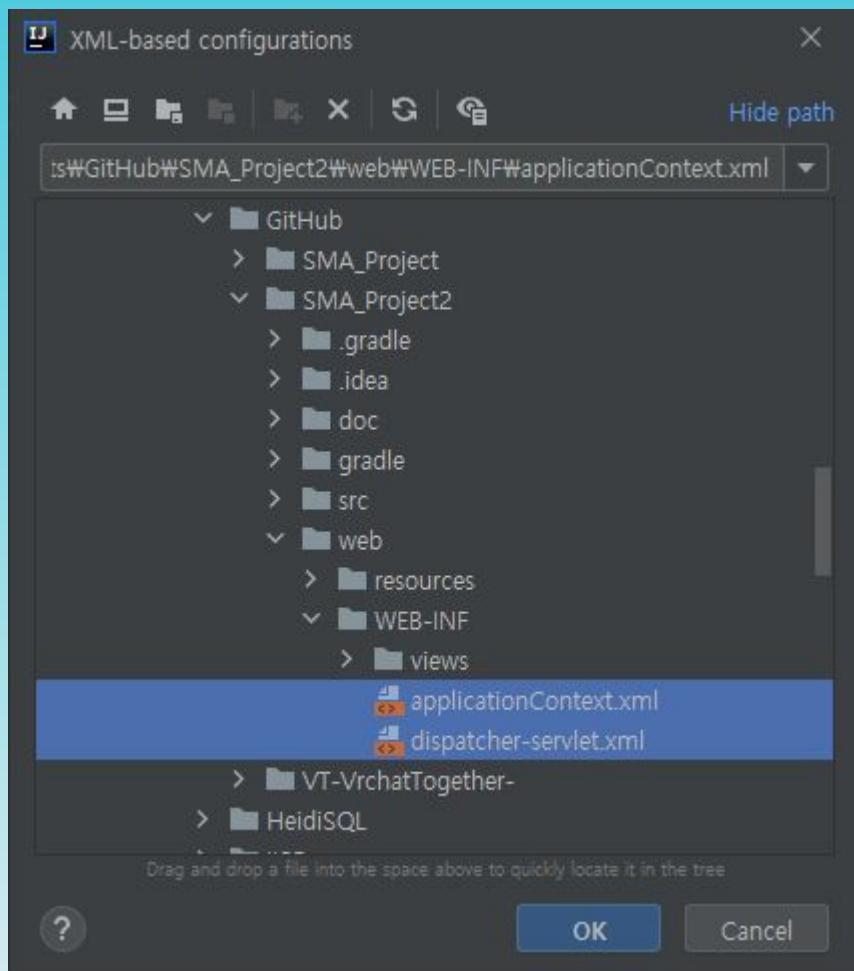
SMA_Project
Setting



SMA_Project Setting

MainProject
Setting

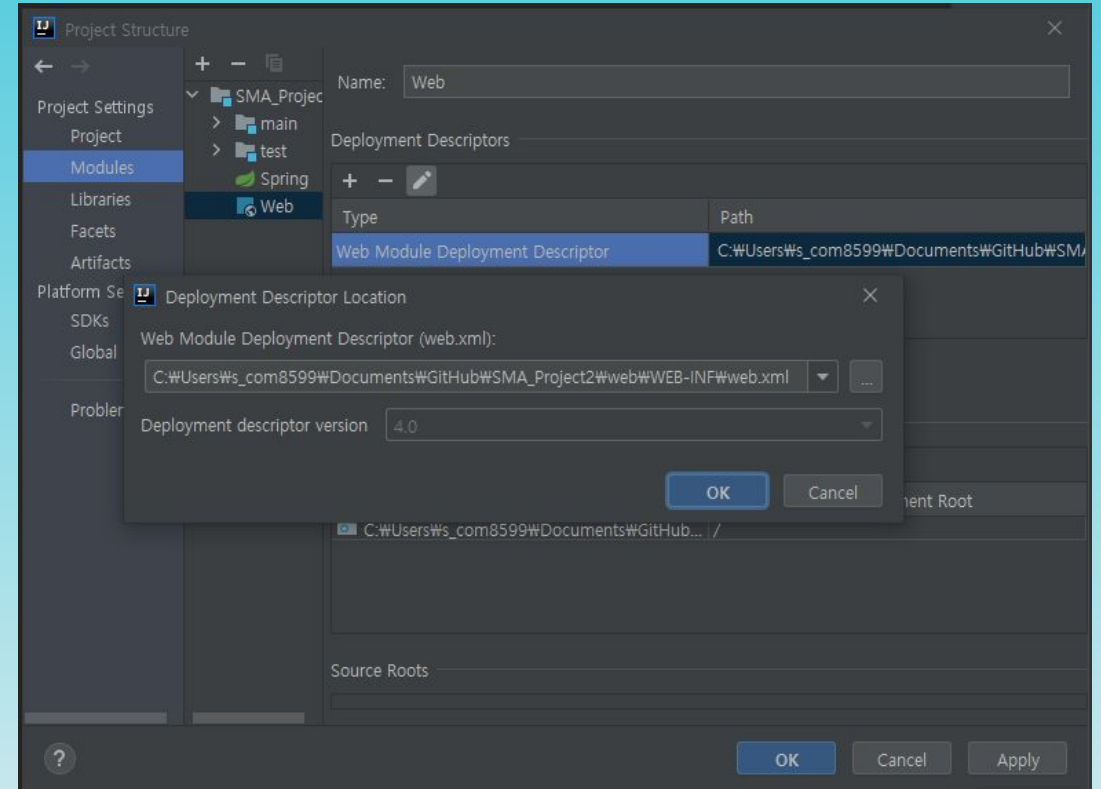
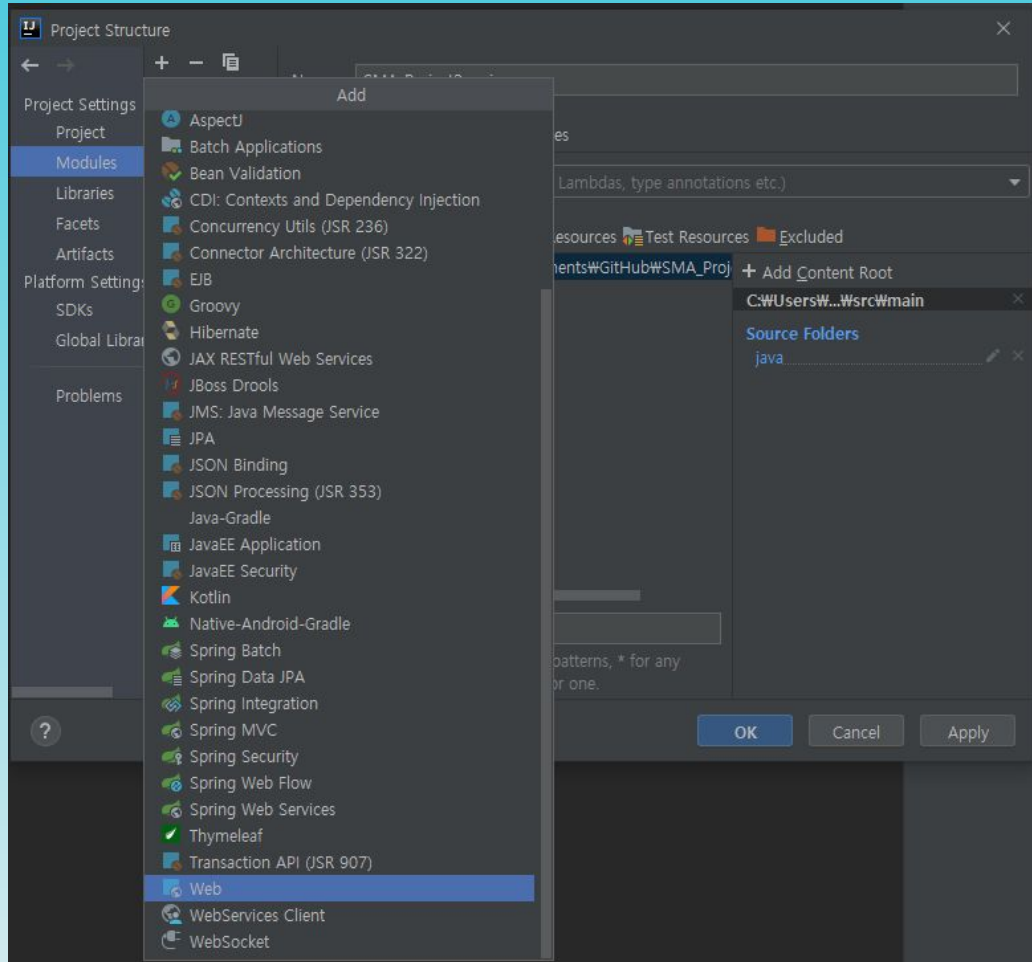
SMA_Project
Setting



SMA_Project Setting

MainProject
Setting

SMA_Project
Setting

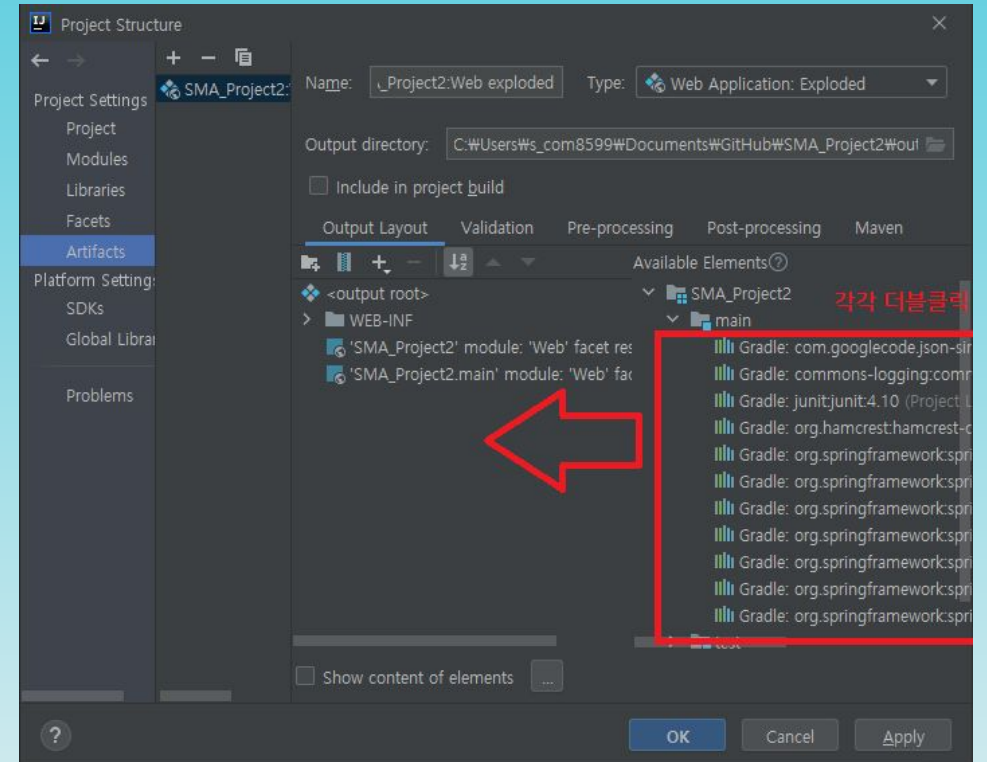
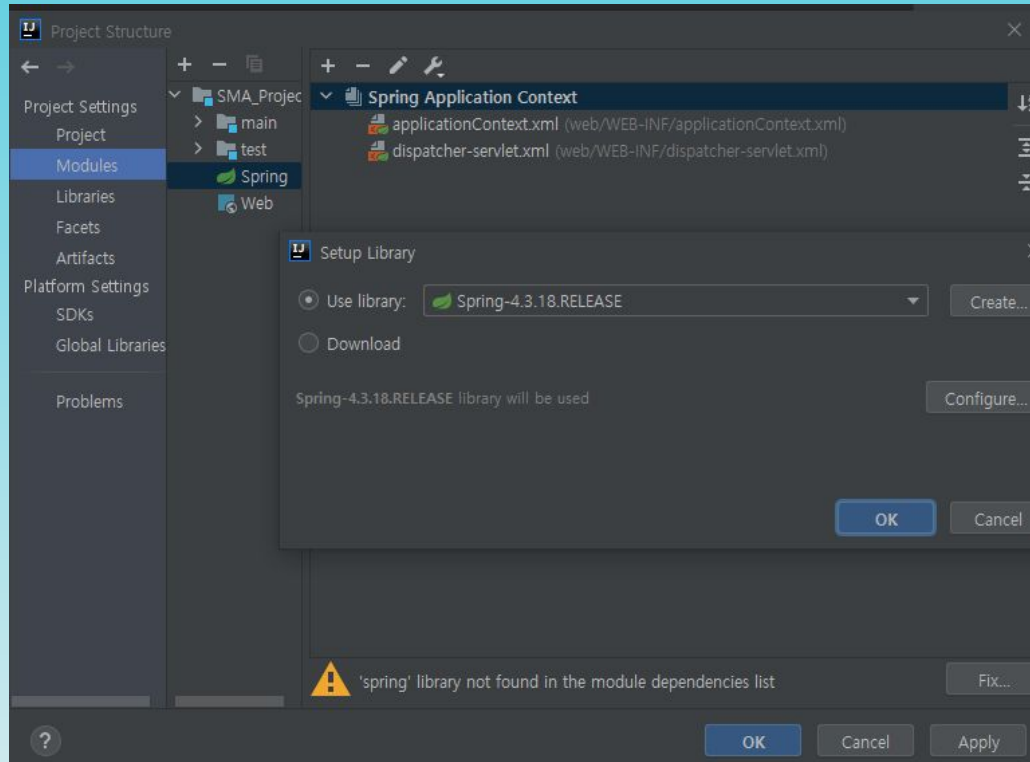


SMA_Project Setting

MainProject
Setting

SMA_Project
Setting

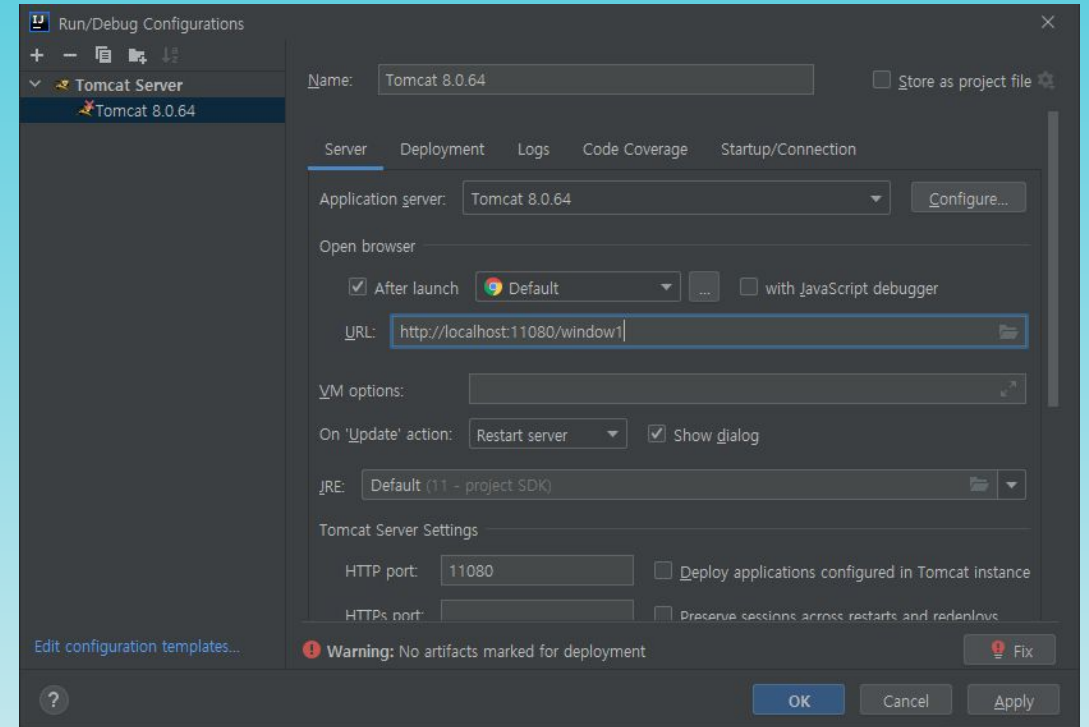
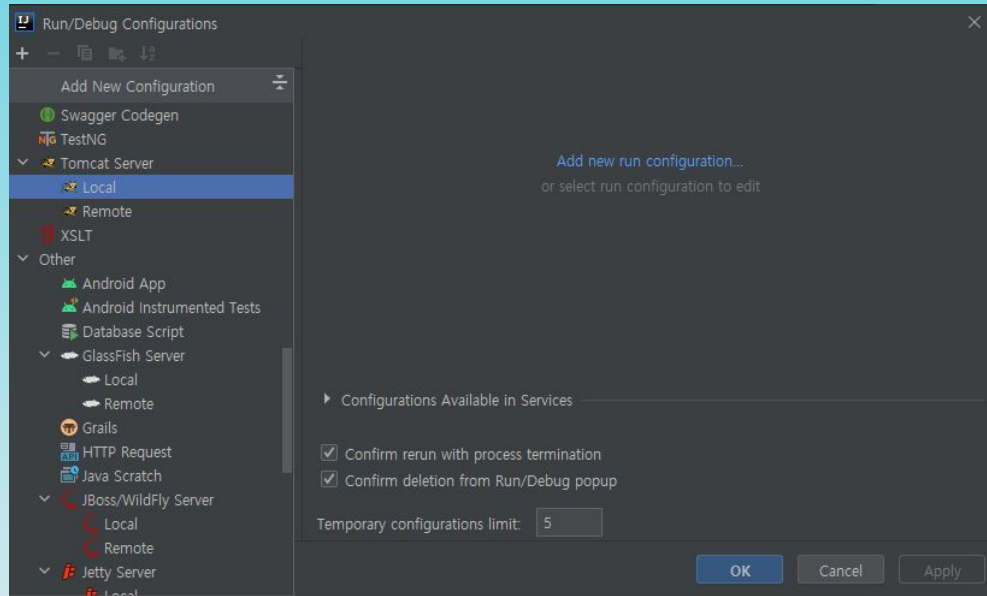
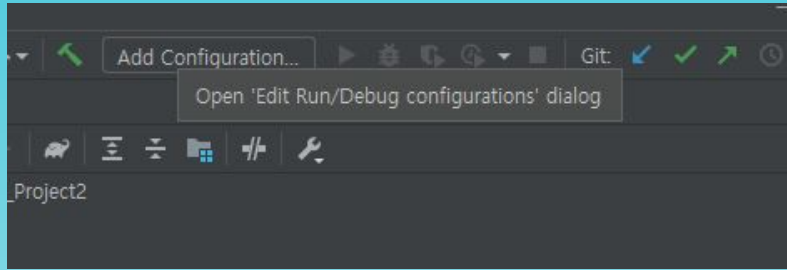
동일한 방식으로 상단의 프로젝트에도 스프링과 web을 추가한후에 하단의 fix를 눌러 spring4 라이브러리를 추가한다.



SMA_Project Setting

MainProject
Setting

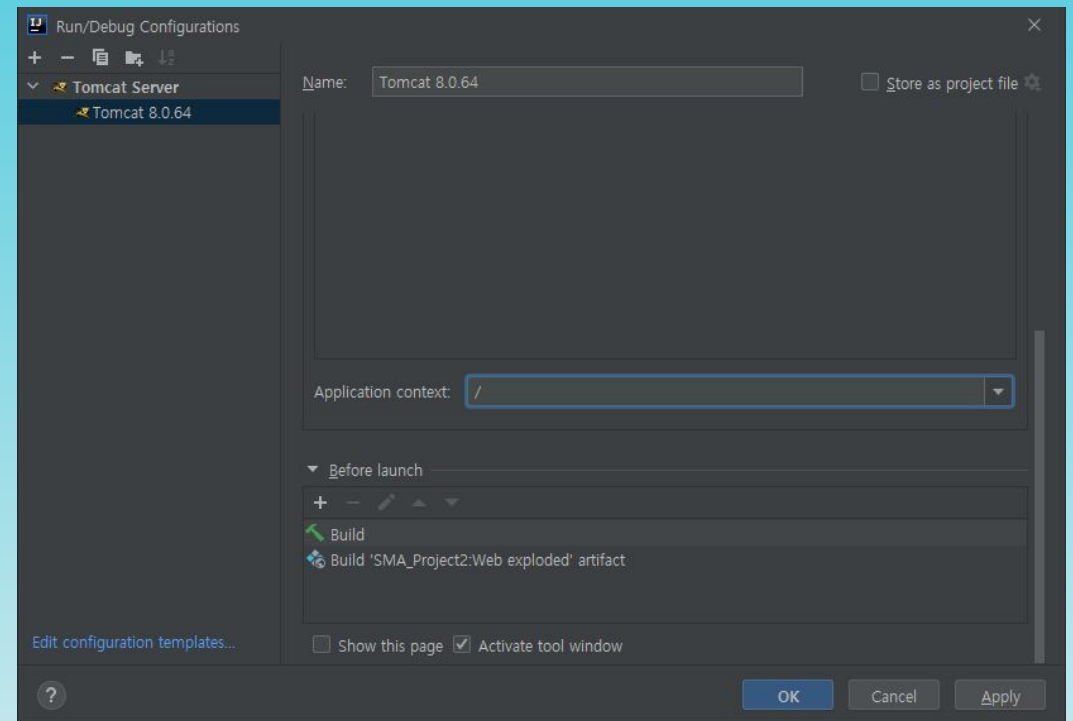
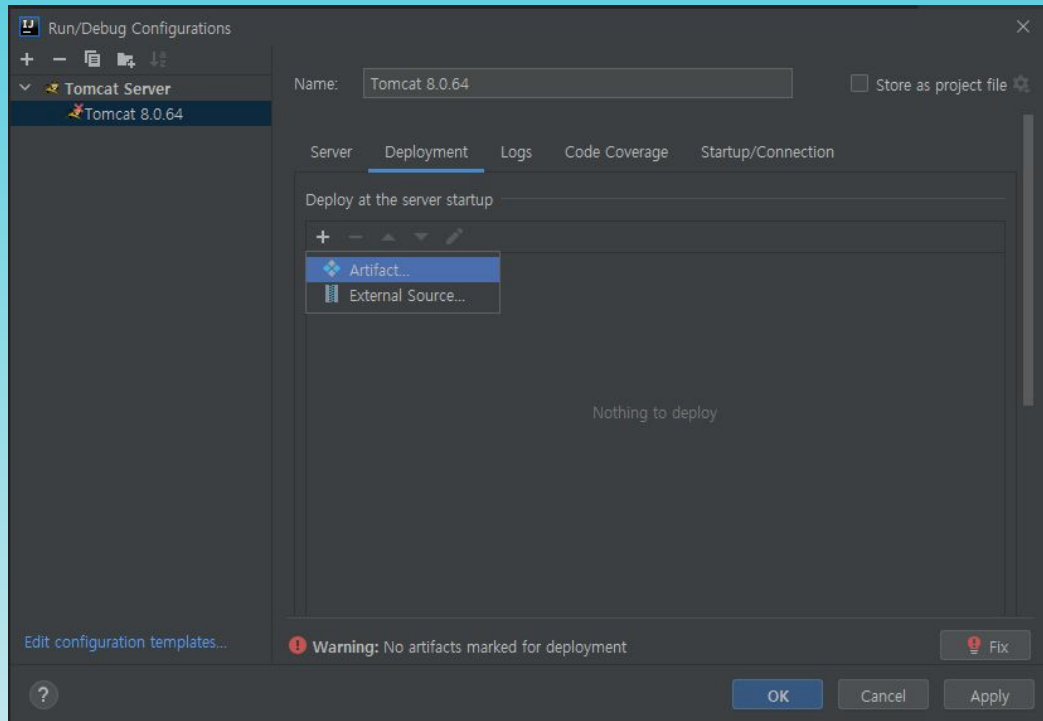
SMA_Project
Setting



SMA_Project Setting

MainProject
Setting

SMA_Project
Setting



감사합니다